

# Greenwood Genetic Center Partnership Campus

## GGC Partnership North

Site	Area	Capacity	Parking
1	4 acres	30,000 gsf	120 cars
2	4 acres	40,000 gsf	160 cars
3	3 acres	40,000 gsf	160 cars
4	4 acres	40,000 gsf	160 cars
5	4 acres	40,000 gsf	120 cars
6	4 acres	60,000 gsf	240 cars
7*	6 acres	60 du's	100 cars
8*	6 acres	60 du's	100 cars
9*	6 acres	62 du's	100 cars

\*Indicates mixed-use residential which is measure in developmental units (du's)

## GGC Partnership South

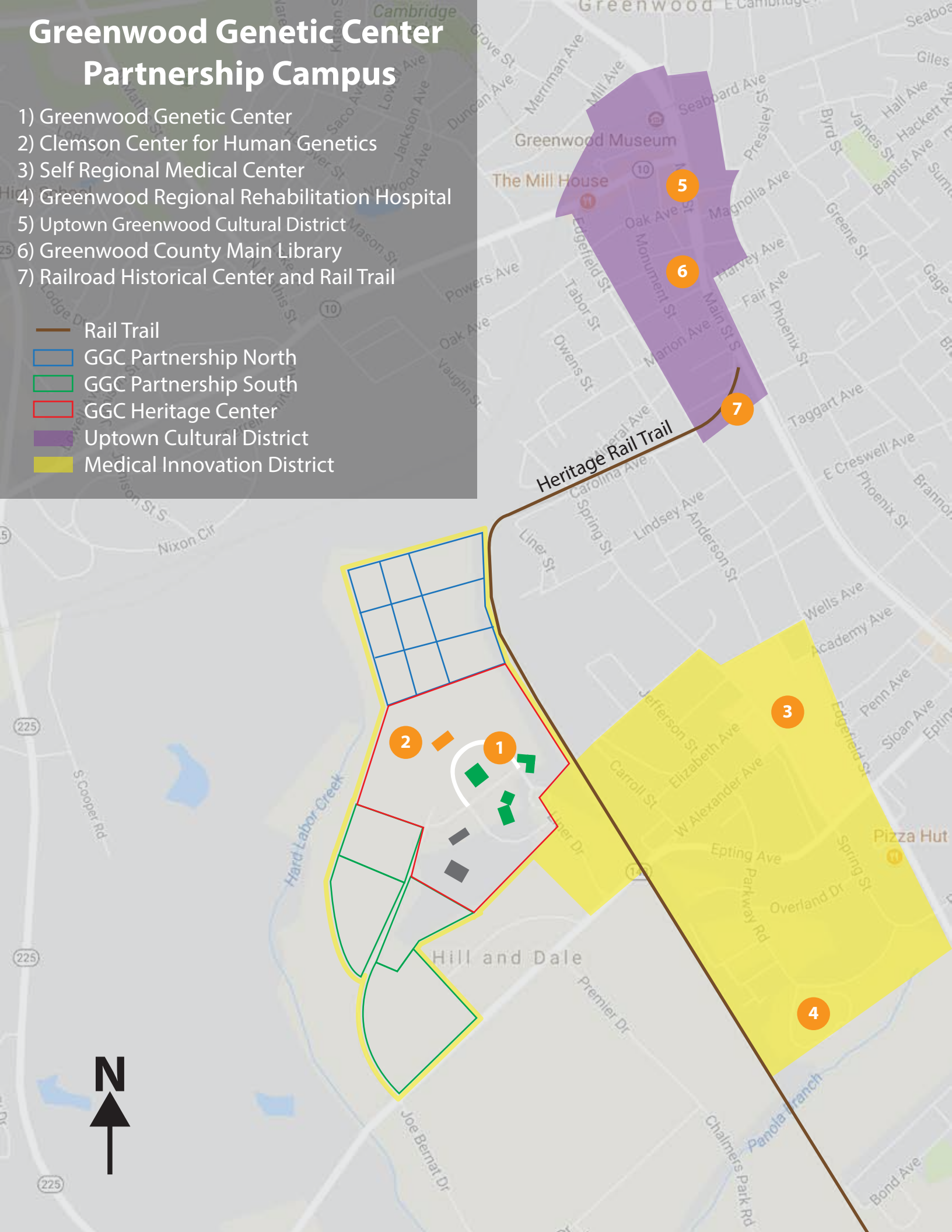
Site	Area	Capacity	Parking
1	21 acres	180,000 gsf	720 cars
2	9 acres	90,000 gsf	360 cars
3	8 acres	90,000 gsf	360 cars
4	6 acres	40,000 gsf	160 cars

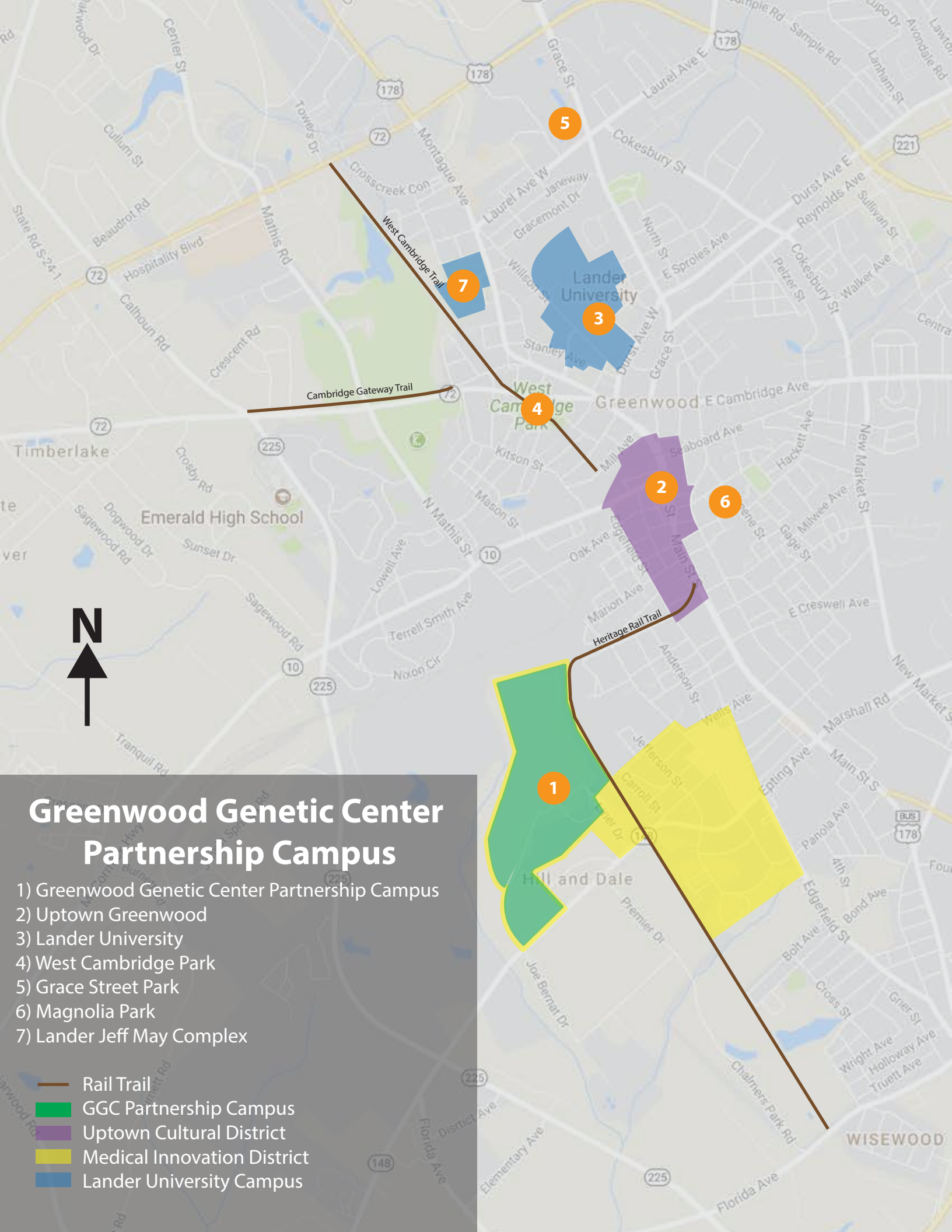


# Greenwood Genetic Center Partnership Campus

- 1) Greenwood Genetic Center
- 2) Clemson Center for Human Genetics
- 3) Self Regional Medical Center
- 4) Greenwood Regional Rehabilitation Hospital
- 5) Uptown Greenwood Cultural District
- 6) Greenwood County Main Library
- 7) Railroad Historical Center and Rail Trail

-  Rail Trail
-  GGC Partnership North
-  GGC Partnership South
-  GGC Heritage Center
-  Uptown Cultural District
-  Medical Innovation District





# Greenwood Genetic Center Partnership Campus

- 1) Greenwood Genetic Center Partnership Campus
- 2) Uptown Greenwood
- 3) Lander University
- 4) West Cambridge Park
- 5) Grace Street Park
- 6) Magnolia Park
- 7) Lander Jeff May Complex

- Rail Trail
- GGC Partnership Campus
- Uptown Cultural District
- Medical Innovation District
- Lander University Campus